



OWNER'S MANUAL

Bridge Crane Electrical Panel



Table of Contents

1.0 Product Introduction 3
2.0 Panel Features..... 3
3.0 Panel Electrical Data..... 4
Starke Products Warranty..... 9

1.0 Product Introduction

Thank you for purchasing a Starke SCP Bridge Crane Control Panel. The panel you have purchased includes a main-line contactor for controlling line voltage to all devices. All panels feature Danfoss Variable Frequency Drive for smooth two speed start/stop operation of bridge motion. The 230V single phase option features inverter/VFD to convert single phase line voltage to 3-phase for bridge end truck motors. The wiring and components are neatly installed and labeled allowing easy troubleshooting & traceability.

When preparing to order take note of the following items to help select proper panel for your application:

1. Combined horsepower and kilowatts of bridge end truck motors.
2. Total amp draw expected through panel, (Example, Hoist, Trolley, End Truck, total amps of all components).
3. Incoming voltage, Expected output voltage.

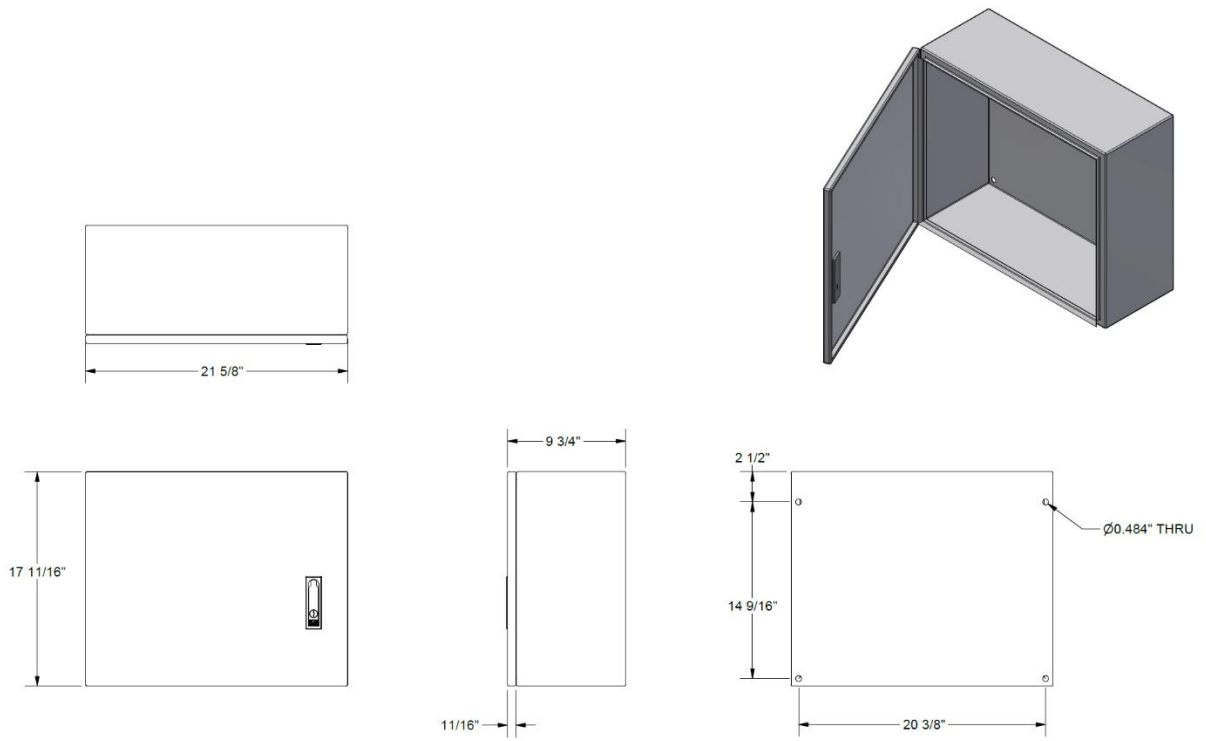
2.0 Panel Features

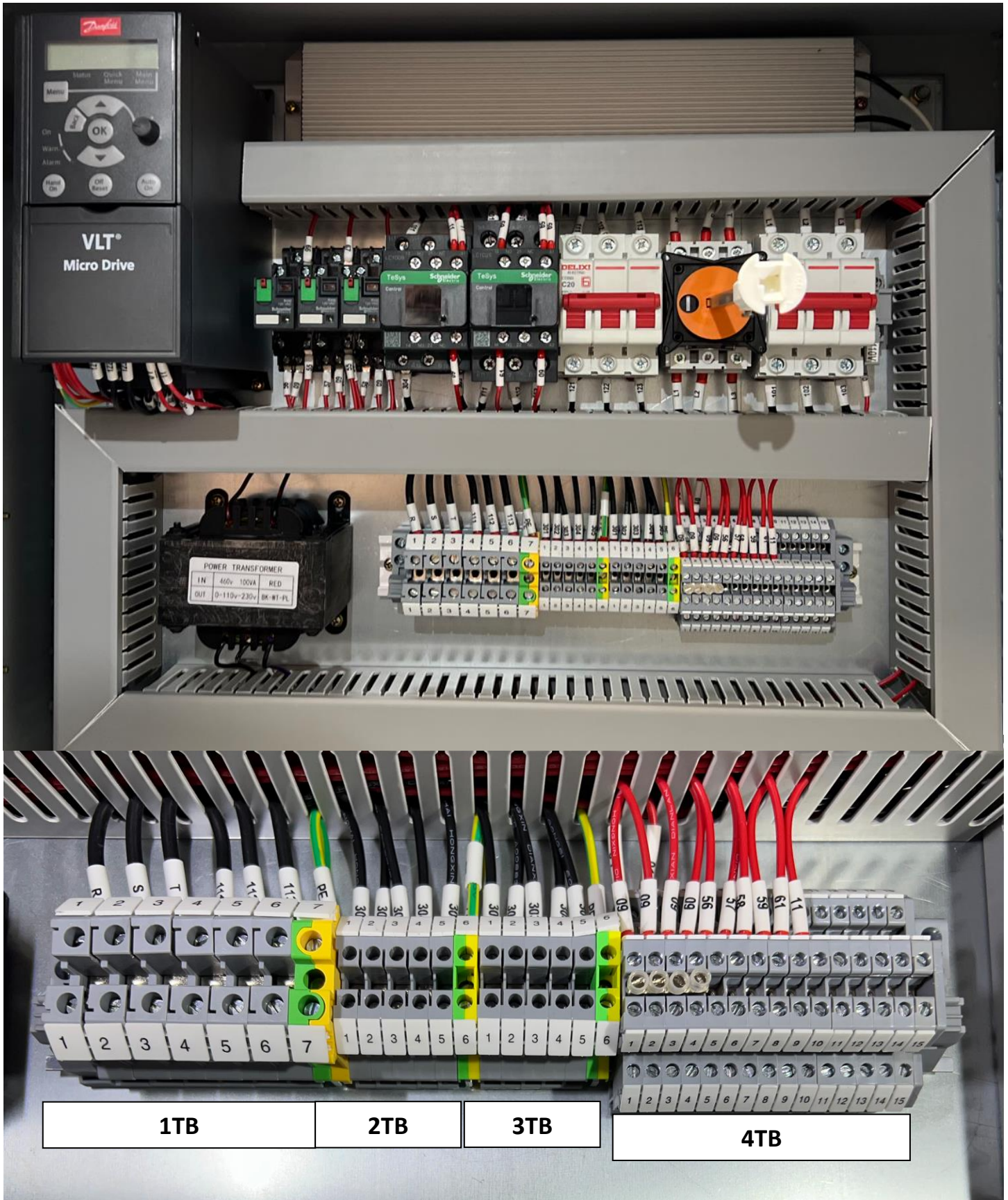
1. Through door safety disconnect switch with lockout tag out function.
2. Quality Schneider Electric relays and contactors.
3. Reliable Danfoss VLT Micro Drive FC51 variable frequency drive and motor braking resistor.
4. Resettable circuit breakers to eliminate the need for expensive fuses.
5. Local 120Vac (100va) control power transformer to provide power to add on radio system or warning beacons.
6. Sturdy cabinet construction with locking and gasketed door.
7. Need a custom panel, contact your Starke USA representative for assistance.
8. Panel Dimensions: 21 5/8" W. x 17 3/4" H. x 10" D.

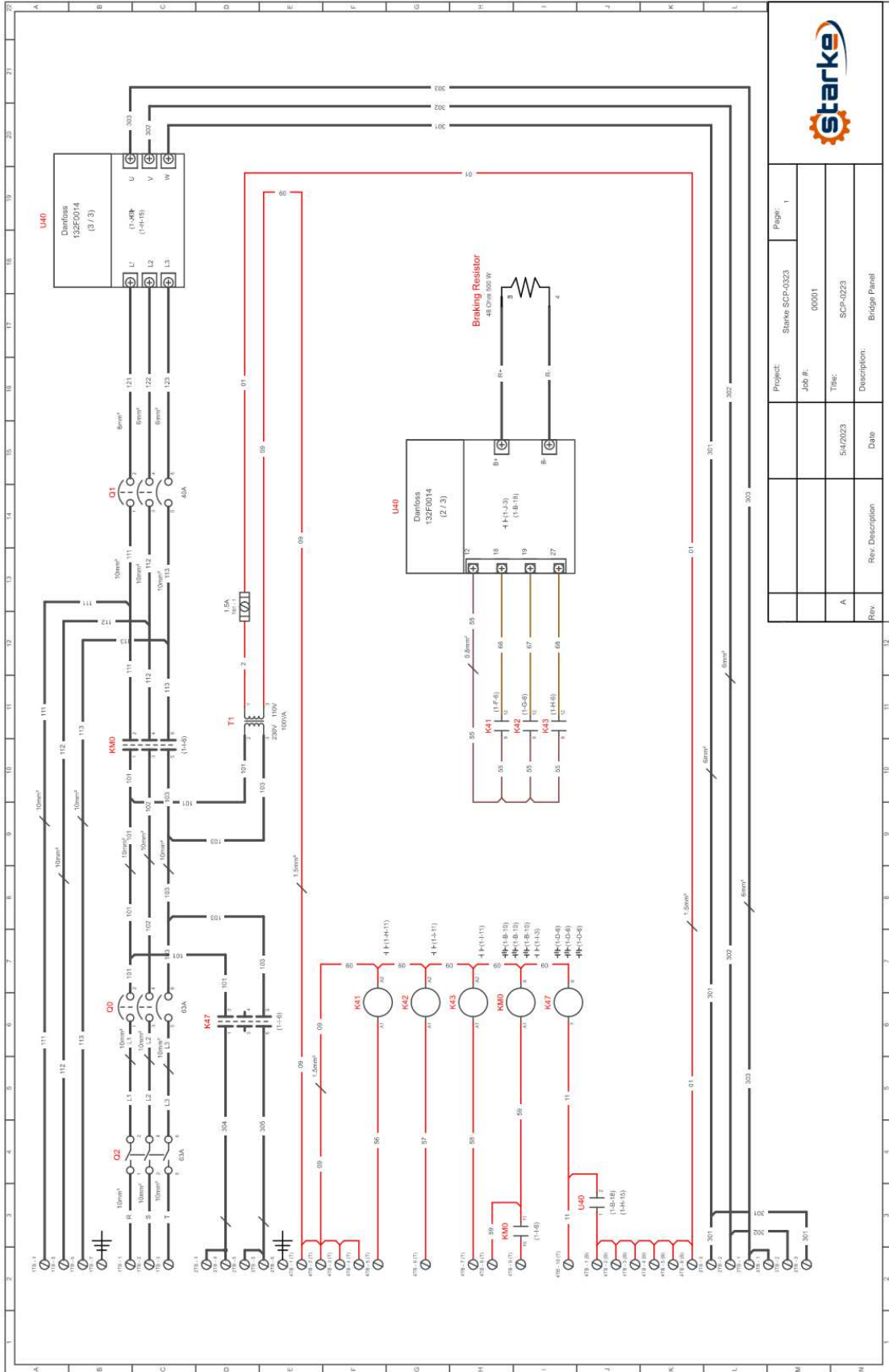
3.0 Panel Electrical Data

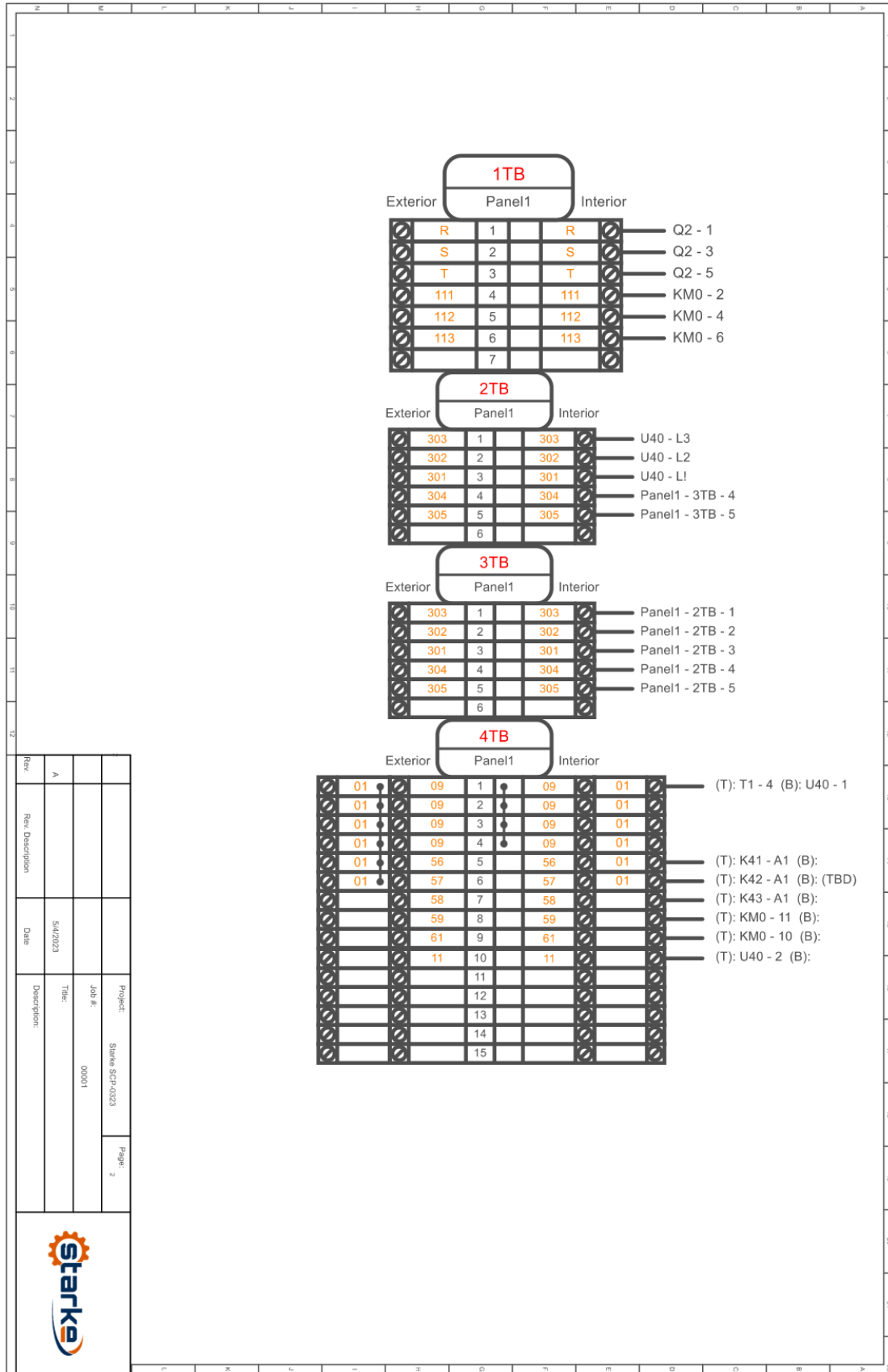
Electrical Data – Motor and VFD								
Model #	Description	End Truck Motor Data				VFD Circuit Breaker	VFD Max Continuous Amps	Main Breaker Amps (C Curve)
		Combined HP & kW of 2 Motors		Danfoss VLT Micro Drive FC 51				
		Motor H.P. (Max)	Motor of kW (Max)	VFD P/N	Rated H.P./kW			
SCP-0346	3HP Control Panel (460/3/60)	3	2.2	132F0022	3 / (2.2)	20	7.3	32
SCP-0446	4HP Control Panel (460/3/60)	4	3	132F0024	4 / (3.0)	40	11.5	63
SCP-0746	7.5HP Control Panel (460/3/60)	7.5	5.5	132F0030	7.5 / (5.5)	40	19.2	63
SCP-0223	2HP Control Panel (208~230/3/60)	2	1.5	132F0012	2 / (1.5)	25	10.9	-
SCP-0323	3HP Control Panel (208~230/3/60)	3	2.2	132F0014	3 / (2.2)	40	15.4	-
SCP-0523	5HP Control Panel (208~230/3/60)	5	3.7	132F0016	5 / (3.7)	40	24.3	-
SCP-323S	3HP Control Panel (208~230/1/60)	3	2.2	132F0017	3 / (2.2)	50	26	-

Panel Dimensions: 21-5/8"W x 17-11/16"H x 9-3/4"D









120v Horn/Strobe Connection:
4TB - 1 : Neutral
4TB - 10 : Horn/Strobe (on when bridge motion active)

Rev	Rev Description	Date	Project: Starke SCP-023	Page: 2
A		5/4/2023	Job #: 00001	
			Title:	
			Description:	





Starke Products Warranty

1 Year (12 Month) Parts & Labor Warranty

Unless otherwise specified, Starke guarantees that our products are free from material defects in design and workmanship under normal use, proper maintenance, and service.

This warranty is strictly limited to 12 months for single shift operation or 2,000 hours after installation, or 14 months after shipment, whichever is shorter. Within ten days after defect is found, warrantee must deliver a written notice to Starke providing defect information. All requested warranty information must be received promptly by Starke in no more than 5 business days.

Customer is responsible for all shipping charges on returned/warrantable items. Starke will cover the repair (parts and labor) at no charge or provide a replacement item at Starke's discretion.

This warranty does not cover defects or damage caused by acts of God, unusual wear and tear, improper use, or improper maintenance by the user. No responsibility for consequential damage is expressed or implied, and the responsibility under this warranty/guaranty is limited to the repair or replacement of the defective materials. Repair or replacement of the item is fully at the discretion of Starke.

ALL OTHER REPRESENTATIONS, EXPRESS OR IMPLIED, WARRANTY, OR LIABILITY RELATING TO THE CONDITION OR USE OF THE PRODUCT ARE SPECIFICALLY DISAVOWED, AND IN NO EVENT SHALL STARKE BE LIABLE TO BUYER, OR ANY THIRD PARTY, FOR ANY DIRECT OR INDIRECT CONSEQUENTIAL OR INCIDENTAL DAMAGES

STARKE

Starkeamerica.com/contact-us/

(Intentionally Left Blank)



Contact Your Starke Representative for More Information on Products to Help Maximize Your Workplace Efficiency



Hoists & Trolleys



Crane Components



Electrification



Crane Kits



Slings



Safety

